



Microsoft®
System Center
Configuration Manager 2007 SP1
Feature Integration with Intel vPro Technology

Configuration Manager 2007 Service Pack 1 introduces a new integration with Intel Active Management Technology v3 (AMT), which creates the ability to diagnose, repair and remotely access desktop systems. With ConfigMgr 2007 SP1 and Intel AMT, ConfigMgr can now address and resolve issues without the use of a working operating system or ConfigMgr agent. Through a secure, out of band channel, ConfigMgr and AMT deliver the following core features:

- On-demand and scheduled remote power control
- IDE redirection to remote device or boot media
- Redirection of console for remote interaction with BIOS/boot up screens
- On demand, anytime access to BIOS information, hardware inventory and system power state.
- Consistent UUID with both AMT and ConfigMgr hardware inventory.

Power Control

ConfigMgr expands capabilities for software application installation, updates and operating system task sequencing through secure, remotely initiated power on of computers in hibernation, sleep or fully powered off state to ensure on time, high success rate software installations and updates. On demand, interactive power control gives administrators a secure method to

initiate troubleshooting sessions or select boot-up options. With AMT, ConfigMgr can now offer secure, guaranteed delivery of power on commands directly to systems as an alternative to the UDP based "fire and forget" standard Wake on LAN method. Status clearly indicates results of power on events that can be correlated directly to advertisements or software update deployments.

IDE Redirection

By pairing AMT's IDE redirection capability with ConfigMgr's operating system provisioning capabilities, businesses can securely and remotely install operating systems without requiring local agents, PXE servers or local boot media. On demand IDE redirection allows help desk personnel to remotely launch diagnostic tools or repair tools to troubleshoot, repair or rebuild operating systems. Through a combination of network boot and Configuration Manager task sequence targeting, full end to end secure operating system provisioning is possible.

Console Redirection

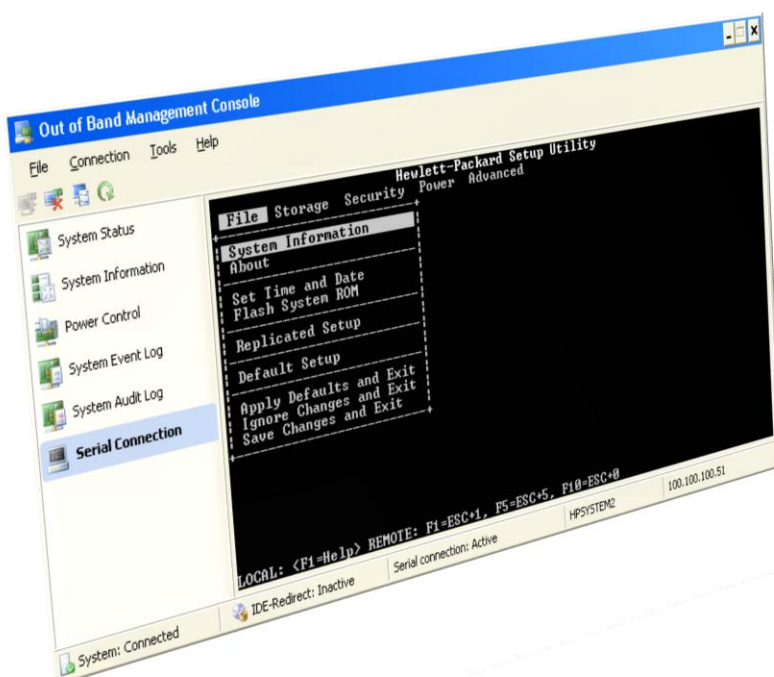
ConfigMgr includes a new Out of Band Console that provides a secure, remote, interactive Serial over LAN session with AMT enabled computers. This session gives full remote control access to BIOS configuration, interactive boot choices, and other pre-boot environment operations. Help desk administrators can now remotely change mis-configured BIOS options, and can even bypass a BIOS based "Admin password" that would normally prevent boot up or BIOS access.


On Demand system access

Through AMT's Out of Band Console, administrators can remotely view system power state, system date, time, UUID, IP address and core system hardware inventory. Access to AMT's internal logging is provided for secure auditing and troubleshooting of system operations that occur independently from the operating system.

Consistent UUID

Asset management can be challenging with agent based systems that may incorrectly assign new "unique" ID's to computer systems. Through secure, remote inventory of the UUID stored in AMT, administrators





can rely on a unique hardware base identifier for quickly resolving duplicate inventory data.

Other Feature extensions:

Full status messaging - Audit status messages for complete tracking and auditing of all activities through standard ConfigMgr status messages.

Reporting – New and updated ConfigMgr reports that identify AMT capable desktop systems, site system activities and auditing of out of band console activity.

Secure TLS sessions – Configuration Manager supports TLS authentication to AMT devices for all connections and all activity. Kerberos / Active Directory integration –Easy and secure integration with Active Directory allows domain user and security group based authentication for Out-of-Band console features.

AMT provisioning – ConfigMgr fully integrates the provisioning functions to allow Configuration Manager to manage and maintain the settings and configuration of AMT devices from within the Configuration Manager console. The entire provisioning lifecycle from initial provisioning, configuration updates and unprovisioning is included.

Extended Hardware Inventory

ConfigMgr client agent automatically extends the base hardware inventory with Intel AMT specific inventory information. This enables easy identification of AMT based computers for building collections, queries or reports.

Additional Information

For more information visit:

<http://www.microsoft.com/systemcenter/configmgr/default.aspx>

To download Configuration Manager 2007 Service Pack 1 , please visit:

<http://technet.microsoft.com/en-us/configmgr/bb625747.aspx>

Requirements:

- Intel vPro Technology enabled clients
- AMT 3.2.1 desktops
- Microsoft System Center Configuration Manager 2007 Service Pack 1

